

JAMES PRUETT
LOCAL GOVERNMENT DIVISION
P.E. NO. 27822(01)

COUNTY COMMISSIONER DISTRICT NO. TWO

SURVEY DATA

1. HORIZONTAL CONTROL:
 - A. HORIZONTAL CONTROL FOR THIS SURVEY IS THE US&GS OKLAHOMA STATE PLANE COORDINATE SYSTEM, LAMBERT PROJECTION (NORTH ZONE).
 - B. ACCURACY - 2ND ORDER OR BETTER
2. BEARINGS:

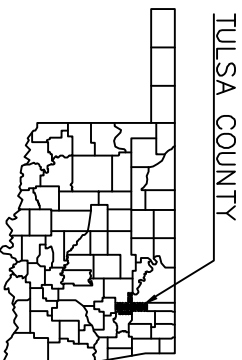
THE BEARINGS SHOWN HEREIN OR HERON ARE GRID BEARINGS DERIVED FROM THE US&GS OKLAHOMA PLANE COORDINATE SYSTEM AND ARE NOT ASTRONOMICAL. THE ANGLE OF VARIANCE BETWEEN GRID NORTH (GN) AND THE ASTRONOMICAL TRUE NORTH (TN) IS DEPICTED DIAGRAMMATICALLY.
3. VERTICAL CONTROLS:
 - A. LEVEL DATUM IS NAVD 88 MEAN SEAL LEVEL - (NGS)

DESIGN DATA	
ADT-2009	50
ADT-2025	80
VEL.	= 25 MPH
FLEX ESALS	0.008 M

SCALES

PLAN 1"=20'
PROFILE-HOR. 1"=20'
VER. 1"=4'
LAYOUT MAP 1"=1000'

LEVEL DATUM IS MEAN SEA LEVEL (USC & GS)



LOCATION MAP

CONVENTIONAL SIGNS

- | | |
|---|--|
| <ul style="list-style-type: none"> PROPOSED ROAD CONTROLLED ACCESS RIGHT-OF-WAY FENCE RAILROADS RANGE & TOWNSHIP LINES SECTION LINES QUARTER SECTION LINES FENCES GROUND LINE EXISTING ROADS BASE LINE GRADE LINE POWER OR TELEPHONE POLE OVERHEAD POWER LINES OVERHEAD TELEPHONE POWER UNDERGROUND TELEPHONE UNDERGROUND LIGHT POLE TRAFFIC SIGNAL SANITARY SEWER WATER LINE GAS LINE PROPERTY LINE | <ul style="list-style-type: none"> STORM UNDERGROUND TRAFFIC SIGNAL UNDERGROUND CATV OVERHEAD CATV MANHOLE METER VALVE TELEPHONE PEDESTAL FIRE HYDRANT DOWN GUY MAL BOX TREE OIL WELLS INACTIVE GAS & OIL WELL BUILDINGS DRAINAGE STRUCTURES - IN PLACE DRAINAGE STRUCTURES - NEW R/W LINES - EXISTING R/W LINES - NEW R/W MARKERS - IN PLACE R/W MARKERS - REMOVE & RESET R/W MARKERS - NEW |
|---|--|

WM - WATER METER W - WATER VALVE GM - GAS METER GV - GAS VALVE
 2009 OKLAHOMA STANDARD SPECIFICATIONS FOR HIGHWAY CONSTRUCTION GOVERN
 APPROVED BY THE U.S. DEPARTMENT OF TRANSPORTATION, FEDERAL HIGHWAY
 ADMINISTRATION, JANUARY 4, 2010.

COUNTY BRIDGE PROGRAM

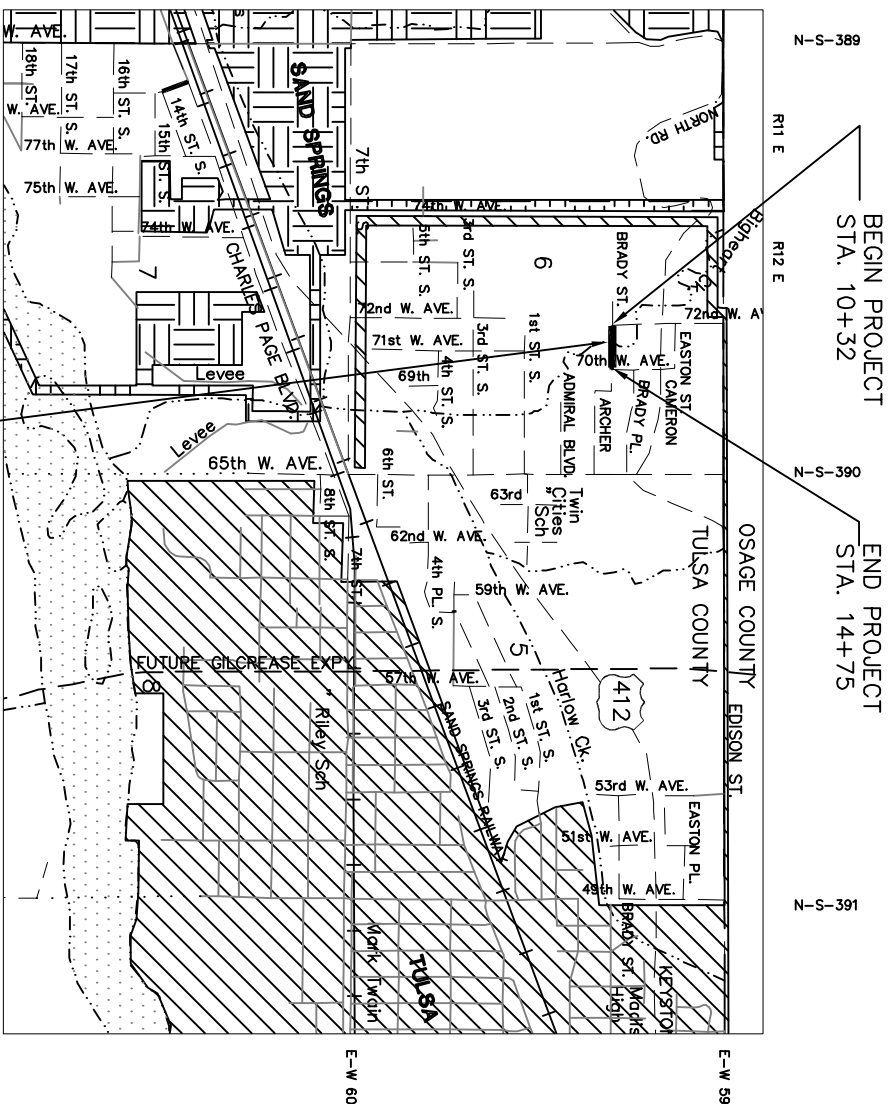
STATE OF OKLAHOMA
DEPARTMENT OF TRANSPORTATION

FEDERAL AID Project Number STP-272D(090)CI
STATE JOB NO. 27822(04)

Bridge and Approaches on Brady Street
Over Bigheart Creek
TULSA COUNTY

LOCATION 72E0593N3890007 (#227)

OLD NBI NO. 00959
NEW NBI NO. 32012
LAT 36°09'26"
LONG 96°04'15"



PROJECT LOCATION

ROADWAY LENGTH	388.15 FT.	0.074 MI.
BRIDGE LENGTH	54.85 FT.	0.010 MI.
PROJECT LENGTH	0.084 MI.	
EXCEPTIONS:	NONE	
EQUATIONS:	NONE	

INDEX OF SHEETS

SHEET NO.	TITLE
0001	TITLE SHEET
0002	TYPICAL SECTIONS & DETAILS
AB01	SUMMARY OF PAY QUANTITIES
B001	GENERAL PLAN
B002	RCB3B30LF-2-00E
B003	BEGR1-2-00E
B004	BEGR2-2-00E
R001	SWMP
R002	PLAN & PROFILE
X001-X002	CROSS-SECTIONS

STANDARDS USED ON THIS PROJECT:

- | | |
|-----------|----------|
| ASCD-5-0 | GRH1-1-0 |
| SPI-4-0 | GRH2-1-0 |
| SPB-1-0 | PCE3-4-0 |
| FHTCP-3-0 | RDI-3-0 |
| SBI-4-0 | TSC1-3-0 |
| TR3-2-01E | TSC2-3-0 |
| | SSS-1-0 |

APPROVED
BOARD OF COUNTY COMMISSIONERS

APPROVED
TULSA COUNTY REGISTERED PROFESSIONAL ENGINEER
MICHAEL WILKS - Tulsa County Clerk

ATTEST
7/19/17

August 24, 2017

OKLAHOMA
DEPARTMENT OF TRANSPORTATION

DEPARTMENT OF TRANSPORTATION
FEDERAL HIGHWAY ADMINISTRATION

DATE APPROVED	BY	DATE APPROVED	BY
	CHIEF ENGINEER		DIVISION ADMINISTRATOR

STATE JOB NO. 27822(04) SHEET No. 0001

FED. ROAD DIST. NO.	PROJECT NO.	SHEET NO.	TOTAL SHEETS

REV. NO.	DESCRIPTION	DATE
1	Revised Sheet R001	8-28-17

